

ITEM 6

Public Health Intelligence

Outbreak Management Advisory Board – 21 December 2020

Data pack produced: 14 December 2020

Produced by: Leon Green, Emel Bagdatlioglu

International

Global situation

The WHO reports:

- 68,165,877 confirmed cases (up 385,477 since last week)
- 1,557,385 deaths (up 6,171 since last week)
- 221 areas/nations with cases

Dashboard accessed 09:35 GMT 10/12/20. Data will reflect different reporting timeframes.

Comparison with Europe

The table to the right shows total numbers and 14-day COVID-19 case notification rate per 100,000.

Based on the 14-day cumulative rate (per 100,000), the UK is ranked 21st for new cases and 16th for deaths.

Total cases in the UK are third highest after France and Italy. Total deaths in the UK are highest in Europe (but subject to variation in death registration practices between countries).

Source: [European Centre for Disease Prevention and Control](https://ecdc.europa.eu/en)

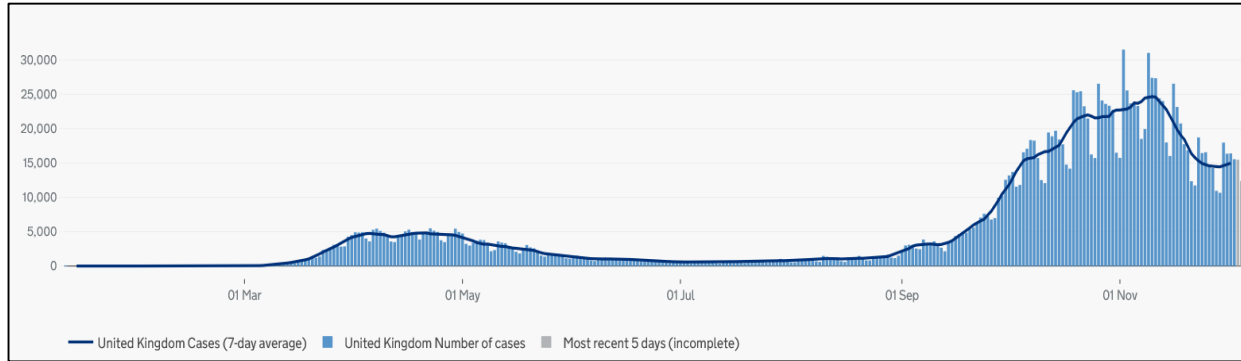
Rank	Country	Cases	Deaths
1	USA	14,972,356	283,994
2	India	9,767,371	141,772
3	Brazil	6,674,999	178,159
7	UK	1,750,245	62,033

Globally, cases now exceed 68 million, with over 1.4 million deaths to date.

The UK has the 7th highest number of cases globally and the 5th highest number of deaths.

Nation	Total to 23/09/2020		14-day cumulative rate per 100,000	
	Cases	Deaths	Cases	Deaths
Luxembourg	38476	360	1199.7	14.2
Croatia	154852	2298	1149.0	20.9
Lithuania	80556	704	1115.3	10.6
Slovenia	87936	1311	1002.3	28.2
Hungary	259588	6280	756.2	22.2
Sweden	297732	7200	702.2	3.8
Liechtenstein	1447	17	641.0	10.4
Austria	305688	3907	590.8	16.9
Bulgaria	168165	5156	554.5	27.6
Portugal	325071	5041	548.3	9.6
Czechia	556927	9136	510.7	15.4
Italy	1757394	61240	501.0	16.5
Romania	524675	12660	484.5	11.8
Cyprus	13286	68	466.6	2.5
Netherlands	569747	9762	443.3	4.3
Poland	1076180	20592	440.1	16.5
Latvia	22104	288	438.1	5.9
Estonia	15510	137	403.9	3.2
Slovakia	119232	1046	398.8	6.2
Denmark	94799	901	375.1	1.8
United Kingdom	1750241	62033	317.3	9.3
Germany	1218524	19932	309.8	6.2
Malta	10699	157	285.1	8.1
Belgium	594436	17507	251.6	12.9
France	2309621	56352	232.5	9.1
Spain	1702328	46646	229.0	6.3
Greece	118045	3194	213.6	12.9
Finland	28242	425	107.9	0.7
Norway	38703	361	103.6	0.9
Ireland	74682	2097	76.5	1.4
Iceland	5506	28	58.3	0.6

UK Cases

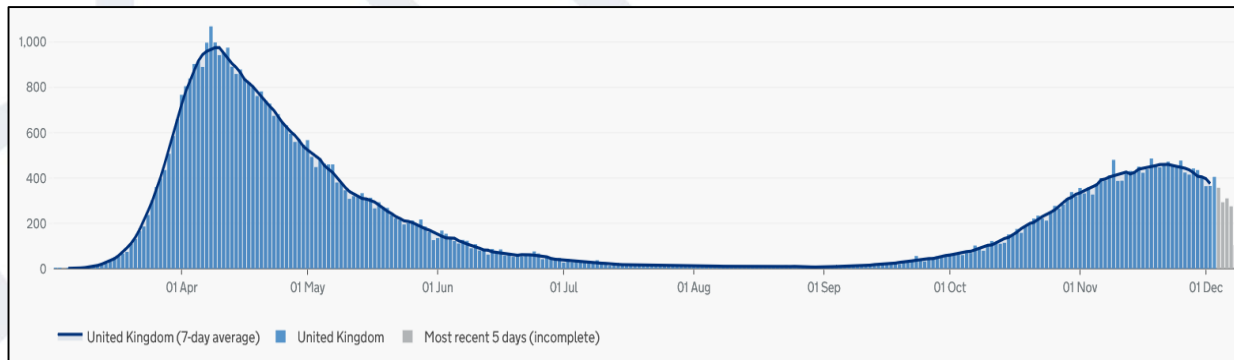


+107,566
since last week

Public Health England data shows there were 1,766,819 lab confirmed cases in the UK (last updated on 9th December), up by 16,578 from the previous day. This is more recent than the data reported by the WHO.

The UK rolling average of daily new cases has increased since September, with the latest average at 14,977 daily cases.

Deaths



+2,884
since last week

There have been 62,566 deaths recorded in the UK (last updated on 9th December), up by 533 from the previous day.

The UK rolling average of daily deaths has increased since September, with the latest average at 375 daily deaths.

PHE revised the presentation of deaths to include all the deaths of people who have had a positive COVID-19 test result from a Public Health or NHS laboratory within 28 days of death. The data do not include deaths of people who had COVID-19 but had not been tested, people who were tested positive only via a non-NHS or Public Health laboratory, or people who had been tested negative and subsequently caught the virus and died. Deaths of people who have tested positively for COVID-19 could in some cases be due to a different cause.

Epidemic-long infection rates

Last refreshed	10/12/2020 (daily)	Data source(s)	NYCC Dashboard via PHE
Descriptor	Total number of people with at least one lab-confirmed positive COVID-19 test result since the start of the pandemic (crude rates per 100,000 population for North Yorkshire).		
Key points	<ul style="list-style-type: none"> • The rate of cases in North Yorkshire is lower than England. • Scarborough has the highest rate amongst the county's districts and Ryedale the lowest. • Compared with authorities with the top 10 highest rates in England, all North Yorkshire's districts are lower. 		

Area	Cases	Rate per 100,000
Craven	1,414	2,474.50
Hambleton	1,785	1,948.80
Harrogate	3,782	2,351.50
Richmondshire	1,047	1,948.60
Ryedale	784	1,415.70
Scarborough	3,140	2,887.20
Selby	2,252	2,485.10
North Yorkshire	14,204	2,298.20
England	1,531,761	2,721.3

Area	Cases	Rate per 100,000
Blackburn with Darwen	10,221	6,827.80
Oldham	15,338	6,468.70
Rochdale	13,313	5,985.70
Manchester	32,475	5,874
Merthyr Tydfil	3,435	5,694.10
Bradford	30,504	5,651.20
Bolton	15,742	5,474.50
Bury	10,354	5,421.20
Salford	13,865	5,356.70
Newcastle upon Tyne	16,214	5,354.30

7-day infection rates for districts

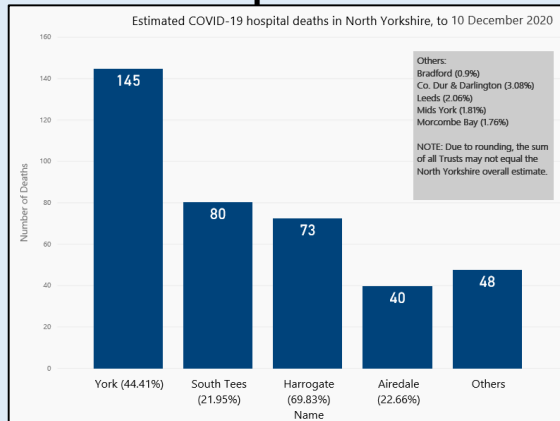
Last refreshed	10/12/2020	Data source(s)	NYCC Dashboard via gov.uk
Descriptor	Number of people with one lab-confirmed positive COVID-19 test result in 7 days of data published on the gov.uk website that aligns with PHE daily briefing dates (crude rates per 100,000 population).		
Key points	<ul style="list-style-type: none"> • The rates here omit the two most recent days of data but better aligns with the latest county-level data from Public Health England's daily briefing. • The total number of cases excludes the most recent days and is lower than the overall count elsewhere in this document. • Scarborough has the highest rate of new cases (over the past 7 days) in North Yorkshire. • Scarborough has seen the highest number of cases in the past 7 days. • Scarborough has a higher cumulative rate than England. 		

Area Name	Population	Cumulative Number of Cases	Cumulative rate per 100,000	New cases over the last 7 days	New cases over last 7 days (all data)*	7-day rate per 100,000	Average Number of new Cases per Day (7 day RA)
England	56286961	1571528	2792.0	101919	91669	181.1	14559.9
Scarborough	108757	3195	2937.7	172	172	158.2	24.6
Craven	57142	1427	2497.3	65	56	113.8	9.3
Selby	90620	2280	2516.0	102	97	112.6	14.6
North Yorkshire	618054	14390	2328.3	591	559	95.6	84.4
Richmondshire	53730	1067	1985.9	43	43	80.0	6.1
Harrogate	160831	3826	2378.9	125	118	77.7	17.9
Ryedale	55380	797	1439.1	40	35	72.2	5.7
Hambleton	91594	1798	1963.0	44	38	48.0	6.3

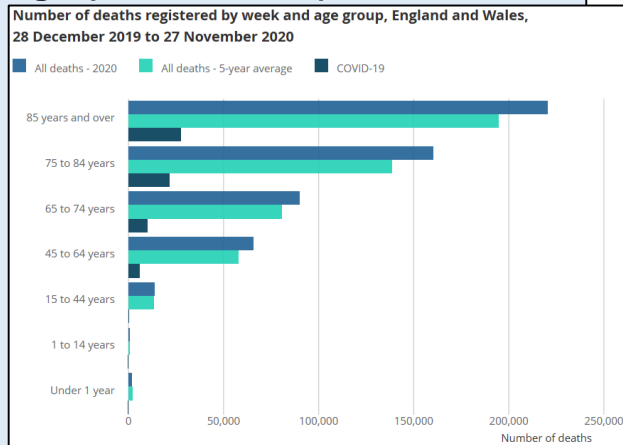
* The 7-day total includes the latest available data and goes beyond the date range shown. All other data on this page excludes the latest 2 days reported since the latest figures are subject to revision.

Deaths

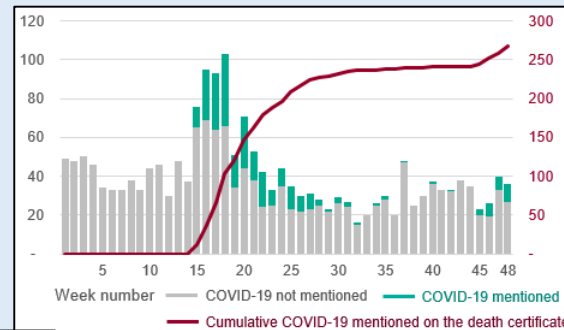
Estimated hospital deaths



Age (national data)



Care homes



Hospital deaths

Estimates suggest about 386 COVID-19 deaths in hospital for North Yorkshire residents. This has increased by 62 since the last board report. There have been an estimated 128 hospital deaths for North Yorkshire residents since 1st September.

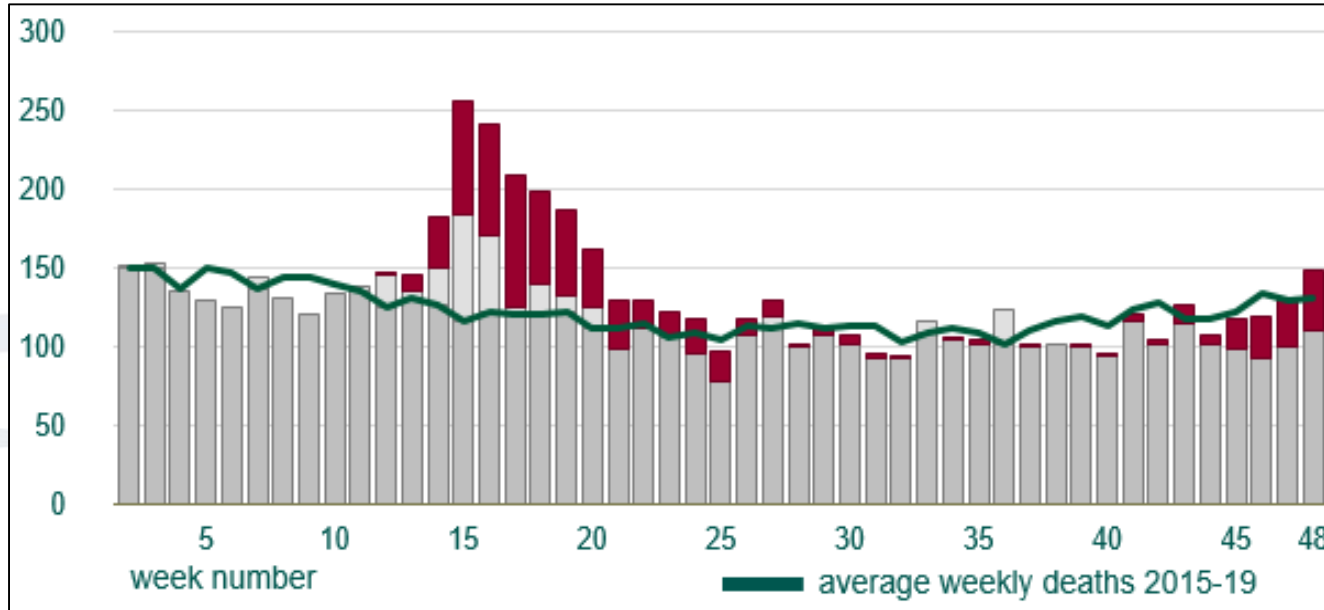
Care home deaths

268 deaths in care homes up to 27 November, up 23 since previous report (to 6 Nov).

Age

Nationally, the number of deaths involving COVID-19 remains higher in older age groups than in younger age groups. The number of deaths up to 27 November 2020 was above the five-year average for all age groups above 14 years, but was below the five-year average for those aged under 15 years.

ONS provisional weekly deaths to 27 Nov.



For week 48, there were 149 deaths reported in North Yorkshire. This is 17 (13%) above the long-term average of 132 for week 48 and 19 higher than week 47 (130 deaths).

There were 39 deaths attributable to COVID-19, 9 more than in week 47. Of the 39 COVID deaths, 27 occurred in hospital and 6 in care homes.

In week 48, COVID deaths comprised 26% of all deaths in the county, up from 13% in week 45 and lower than 40% in week 17.

To 27th November 2020, there have been 6,420 deaths in North Yorkshire from all causes and 708 (11.0%) from COVID-19.

30.1% of deaths from all causes have occurred in care homes. There have been 269 deaths in care homes from COVID-19, 38.0% of all COVID deaths.

Data sources

WHO Coronavirus Disease (COVID-19) Dashboard:

<https://covid19.who.int/>

European Centre for Disease Prevention and Control:

<https://www.ecdc.europa.eu/en/cases-2019-ncov-eueea>

Coronavirus (COVID-19) in the UK: <https://coronavirus.data.gov.uk/>

NHS England, COVID-19 Daily Deaths:

<https://www.england.nhs.uk/statistics/statistical-work-areas/covid-19-daily-deaths/>

Office for National Statistics, Deaths registered weekly in England and Wales, provisional: week ending 2 October 2020:

<https://www.ons.gov.uk/peoplepopulationandcommunity/birthsdeathsandmarriages/deaths/bulletins/deathsregisteredweeklyinenglandandwalesprovisional/latest>